

## Location card: **L1296M - pergola15**



**CODE:** L1296M

**DISTRICT:** isola

**TOTAL SQ.M.:** 240

**HIGHT:** 590m

**FLOOR:** 2

**ROOMS NUMBER:** 7

**ENTRANCE ON STREET:** No

**ENTRANCE FROM COURTYARD:** Si

**TOTAL CAPACITY:** 100 people

### **CONTACT**

**website:** [www.pergola15.it](http://www.pergola15.it)

**email** [umberta.pellizzetti@gmail.com](mailto:umberta.pellizzetti@gmail.com)

**tel.** 3356188222

[Link scheda location Online](#)

### **DESCRIPTION:**

hangar 240 square meters, ex industrial weigh in masonry, iron and glass, particularly bright, 5.90 m. at the top, composed of an open space room on the ground floor, two bedrooms and two bathrooms, warehouse on the mezzanine floor

### **PRICE**

**daily:** 700 € +iva

**fuorisalone:** 10000 € +iva

### **TECHNICAL EQUIPMENT**

sedie, tavoli, divani, impianto audio, luci, proiettore,

### **AVAILABILITY**

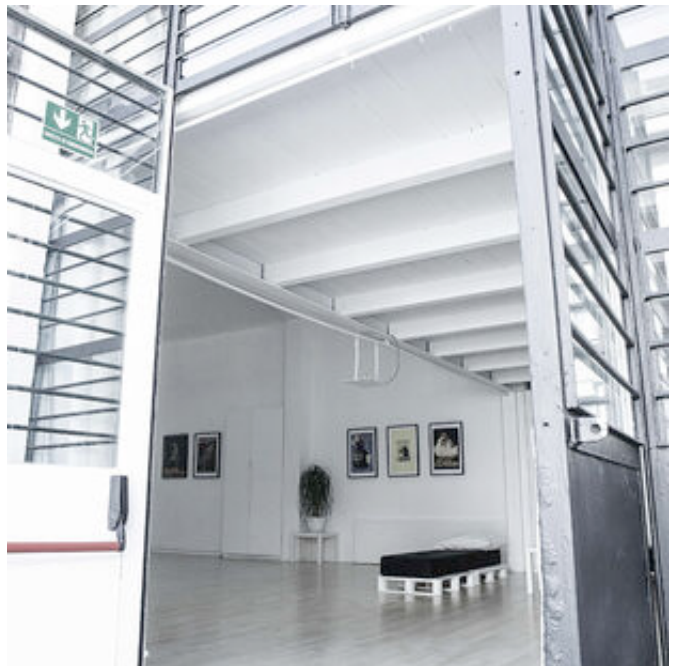
sempre aperto

### **HOW TO REACH US**

via angelo della pergola 11/4 Milano 20159 Milano

MM Isola, MM Garibaldi

## Location card: **L1296M - pergola15**





## Location card: **L1296M - pergola15**

Per qualsiasi dubbio e richiesta potete contattarci via mail e telefono.

**Studiolabo S.r.l.**  
Via Palermo, 1 Milano  
tel. 02 36 63 81 50  
[www.milanolocation.it](http://www.milanolocation.it)

**Milano Location**  
Email: [info@milanolocation.it](mailto:info@milanolocation.it)  
Telefono: +39 02 36 63 81 50

**Milanolocation / Studiolabo**  
Via Palermo, 1 Milano

**Supporto diretto**  
Giulia Gasperini  
Telefono: +39 02 36 63 81 50

---

[www.studiolabo.it](http://www.studiolabo.it)  
[www.milanodesignnetwork.it](http://www.milanodesignnetwork.it)

[www.milanolocation.it](http://www.milanolocation.it)  
[www.brerarealestate.it](http://www.brerarealestate.it)  
[www.breradesigndistrict.it](http://www.breradesigndistrict.it)  
[www.fuorisalone.it](http://www.fuorisalone.it)