

## Location card: **L1354M - SHOWROOM**



**CODE:** L1354M

**DISTRICT:** Navigli

**TOTAL SQ.M.:** 100

**HIGHT:** 4m

**FLOOR:** 1

**ROOMS NUMBER:** 1

**ENTRANCE ON STREET:** No

**ENTRANCE FROM COURTYARD:** Si

**TOTAL CAPACITY:** 70 people

### CONTACT

**website:** <https://www.shoroom.site>

**email** [amministrazione@shodea.it](mailto:amministrazione@shodea.it)

**tel.** 0228098194

[Link scheda location Online](#)

### DESCRIPTION:

Sho.room is located in the heart of Milano, it is a concept gallery exhibiting painting, sculpture, drawing, print, photography and mixed media from Italian and International artists. With 100 square m<sup>2</sup> of exhibition space it's a great venue for an Art event, Fashion show, workshop, private party or corporate reception. The venue has an independent entrance and the room is plenty of natural light flooding through the squared windows. With a capacity of 70+ and the option of dry hire or fully catered, it's a versatile space if you're looking for something a little different. Sho.room is also an Art Gallery where we can get all your works to show up and moreover sell them to interested people.

### PRICE

**daily:** 150 € +iva

**fuorisalone:** 1500 € +iva

### TECHNICAL EQUIPMENT

impianto di illuminazione a binari e faresti orientabili

binari a parete per esposizione opere

impianto di condizionamento

wifi

internet access

smart tv 55 pollici  
bagno dedicato  
spogliatoio  
entrata indipendente

## AVAILABILITY

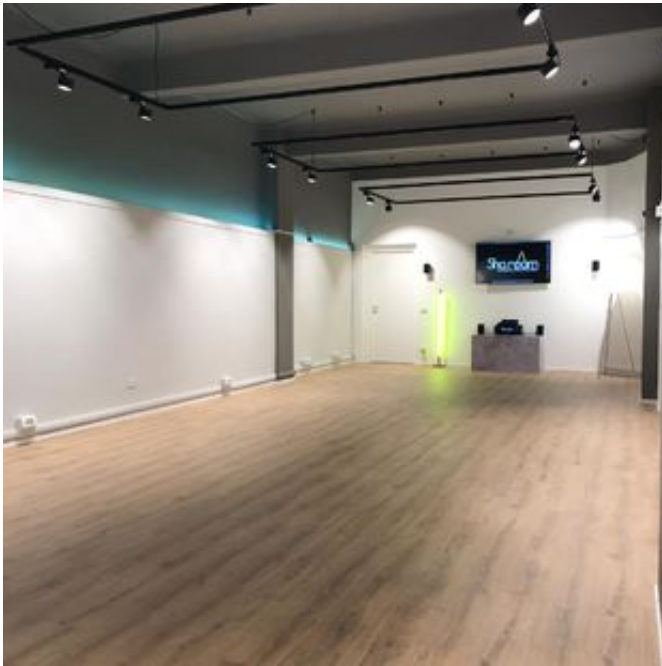
open 7/7 h 24

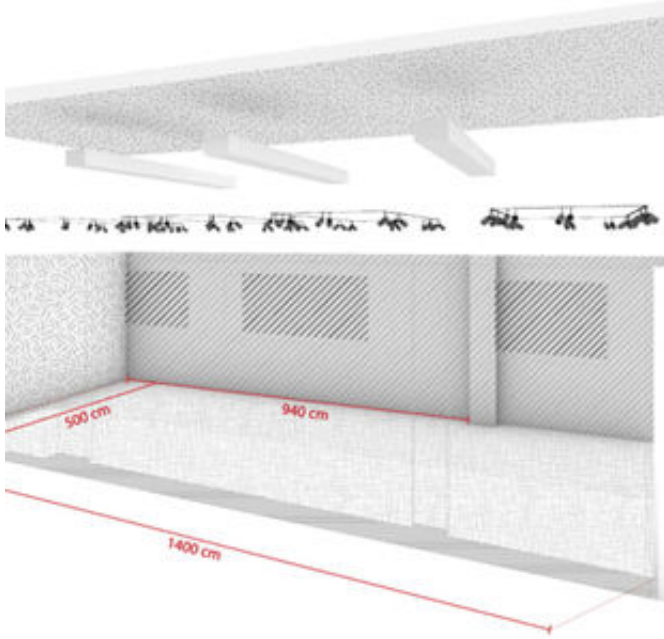
## HOW TO REACH US

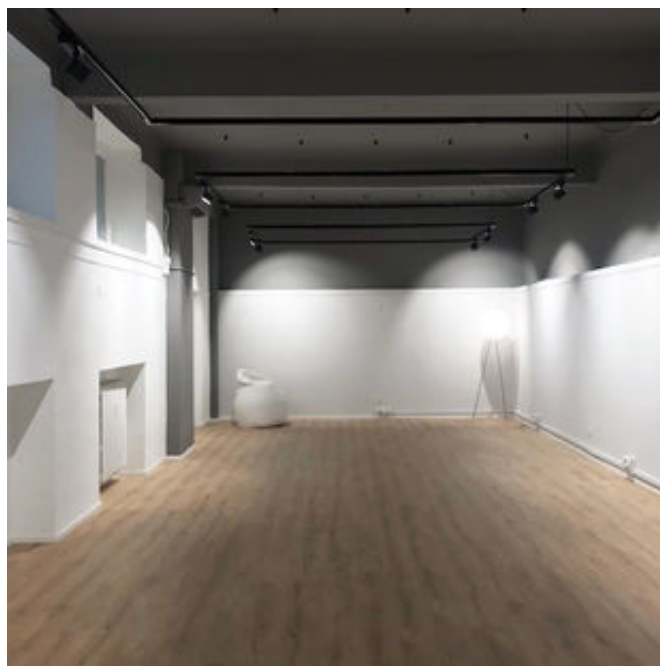
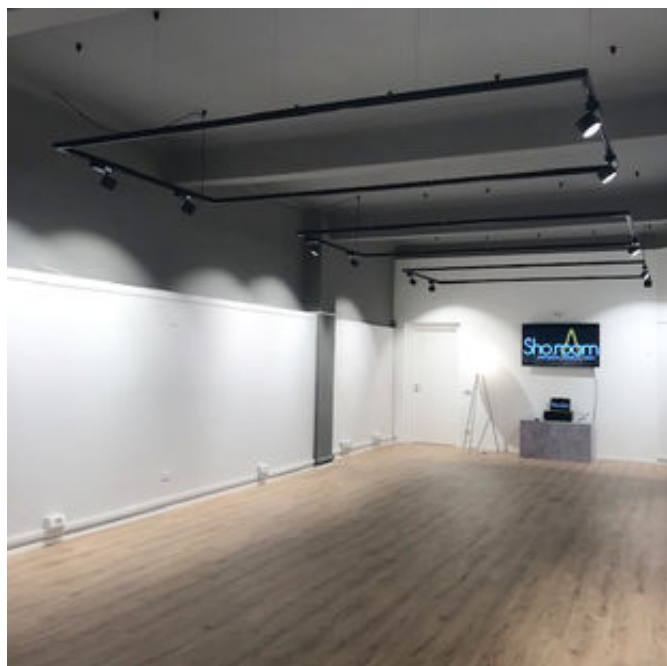
VIA FRANCESCO BRIOSCHI 32 MILANO 20136 MILANO  
Vicino al centro di Milano in zona Navigli Darsena

Tram 3 Duomo - Gratosoglio  
Tram 3 Gratosoglio - Duomo  
Extraurban lines  
Bus 59 Famagosta M2 - P.ta Lodovica  
Bus 59 P.ta Lodovica - Famagosta M2  
Bus 71 Famagosta M2 - Romolo M2  
Bus 71 Romolo M2 - Famagosta M2

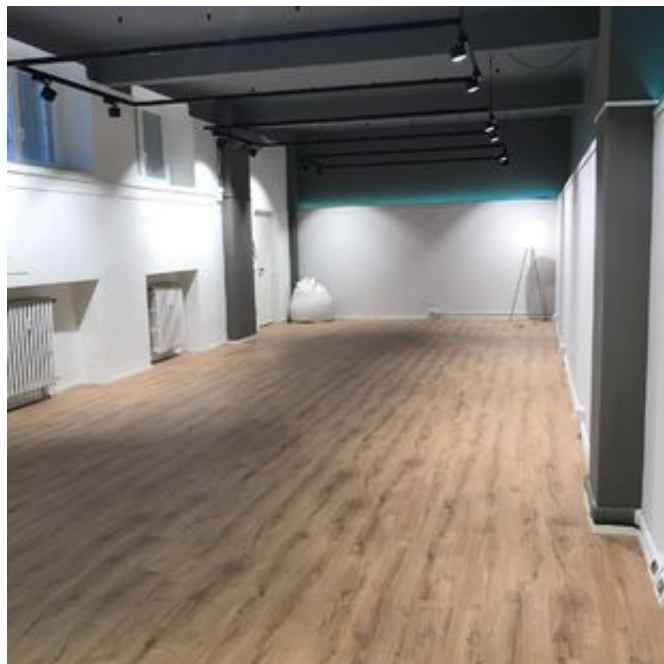
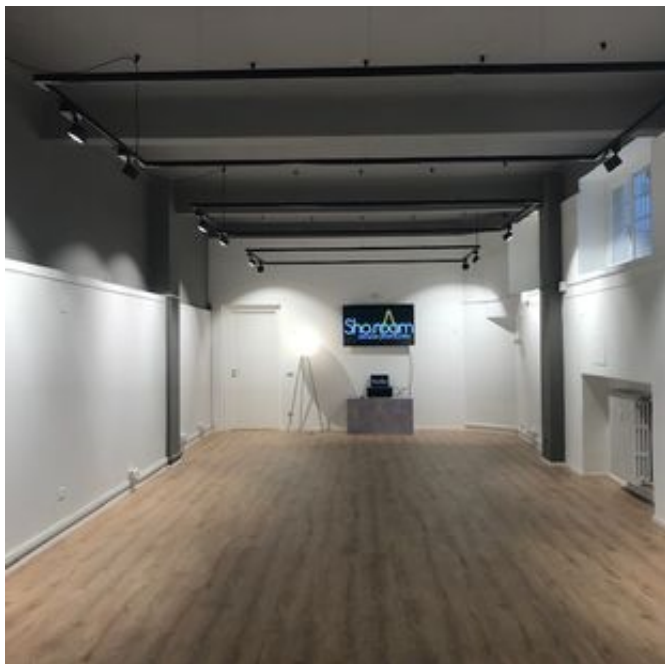
## Location card: L1354M - SHOWROOM

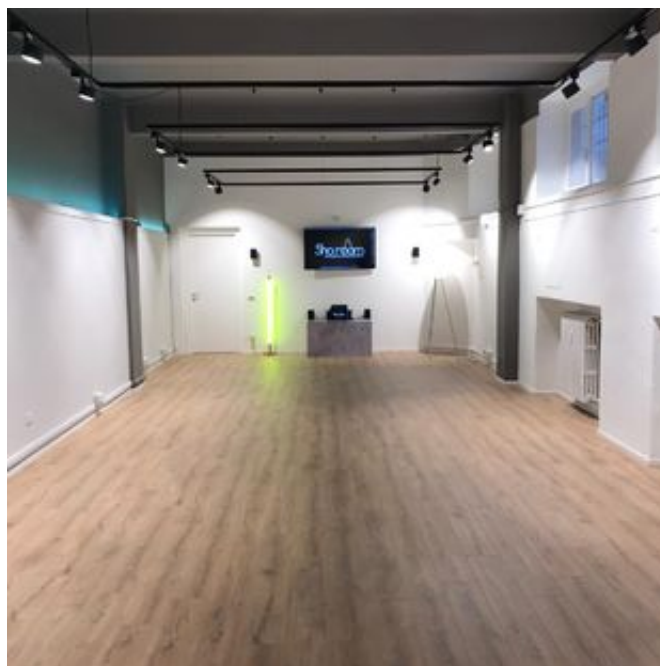












## Location card: **L1354M - SHOWROOM**

Per qualsiasi dubbio e richiesta potete contattarci via mail e telefono.

**Studiolabo S.r.l.**  
Via Palermo, 1 Milano  
tel. 02 36 63 81 50  
[www.milanolocation.it](http://www.milanolocation.it)

**Milano Location**  
Email: [info@milanolocation.it](mailto:info@milanolocation.it)  
Telefono: +39 02 36 63 81 50

**Milanolocation / Studiolabo**  
Via Palermo, 1 Milano

**Supporto diretto**  
Giulia Gasperini  
Telefono: +39 02 36 63 81 50

---

[www.studiolabo.it](http://www.studiolabo.it)  
[www.milanodesignnetwork.it](http://www.milanodesignnetwork.it)

[www.milanolocation.it](http://www.milanolocation.it)  
[www.brerarealestate.it](http://www.brerarealestate.it)  
[www.breradesigndistrict.it](http://www.breradesigndistrict.it)  
[www.fuorisalone.it](http://www.fuorisalone.it)